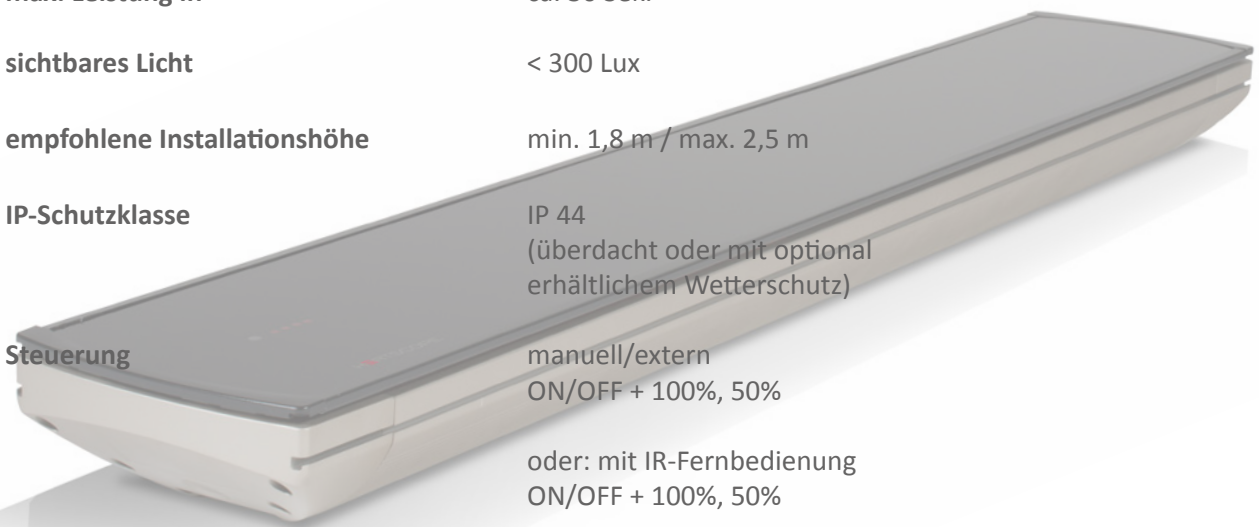


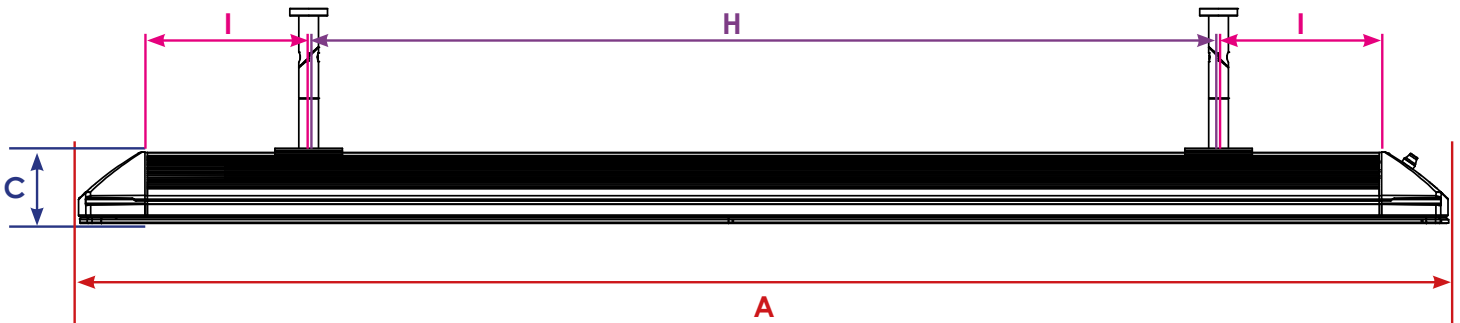
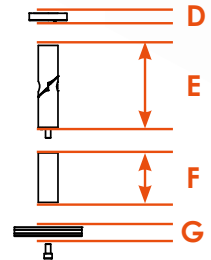
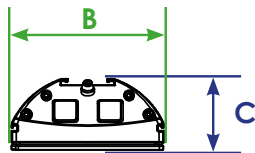
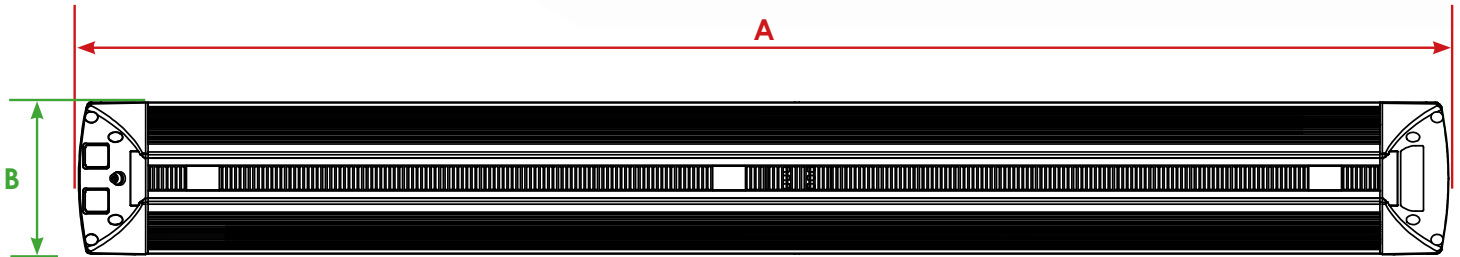
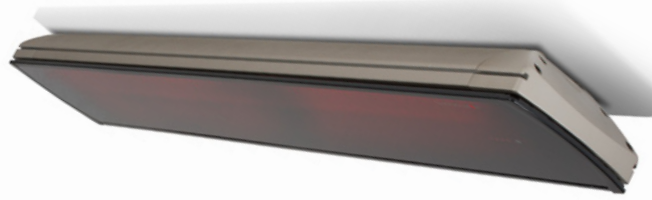
TECHNISCHE DATEN

HEATSCOPE Vision Ambientestrahler

Betriebsspannung	230 V AC ~ – 50/60 Hz
Leistung	1600 W / 2200 W / 3200 W
Stromstärke	6,96 A / 9,57 A / 13,91 A
Kabel	1,1 m / 3 x 1,5 mm ² oder 1,1 m / 4 x 1,5 mm ²
Temperatur Oberfläche	300 °C
Temperatur Gehäuse	max. 130 °C
Filament-Temperatur	1200-1300 °C
Farb-Temperatur	1550-1650 K
max. Leistung in	ca. 30 Sek.
sichtbares Licht	< 300 Lux
empfohlene Installationshöhe	min. 1,8 m / max. 2,5 m
IP-Schutzklasse	IP 44 (überdacht oder mit optional erhältlichem Wetterschutz)
Steuerung	manuell/extern ON/OFF + 100%, 50% oder: mit IR-Fernbedienung ON/OFF + 100%, 50%



HEATSCOPE VISION



	A	B	C	D	E	F	G	H	I
MHS-VE1600 MHS-VT1600	810 mm	184 mm	90 mm	9 mm	100 mm	60 mm	11 mm	≤ 300 mm	≥ 175 mm
MHS-VE2200 MHS-VT2200	1160 mm							≤ 650 mm	≥ 175 mm
MHS-VE3200 MHS-VT3200	1660 mm							≤ 1150 mm	≥ 175 mm