



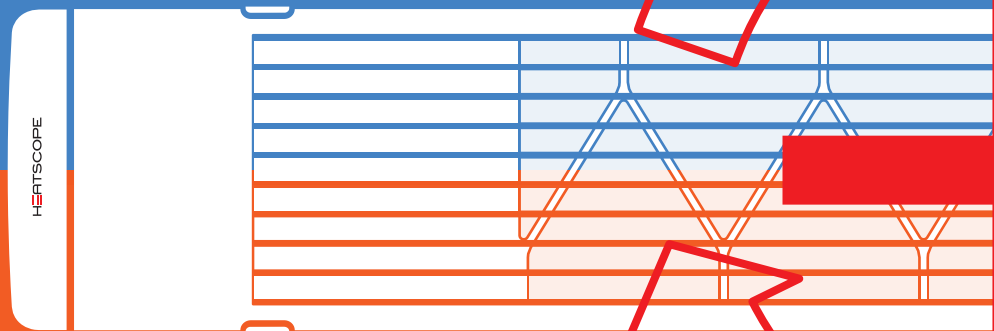
HEATSCOPE®

PURE



AIR

ONE. FOR. ALL.





PURE⁺. SIMPLY. FLEXIBLE.

Inside or outside, sheltered or wide open, at the wall,
on the ceiling or even mobile?

Many questions. One answer: PURE⁺

Comfortable and pleasant warmth through the convex glass front or
maximum heat through the curved design-frontgrid.

A few simple steps turn the ambient heater **PURE**, for sheltered areas,
into the energy heater **NEXT**, for highest heat output.

Glass out. Grid in. Maximum flexibility.

Two applications, one device. Always and everywhere.



TWO. IN. ONE.

Optimal heat output and aesthetics are the top priorities of all HEATSCOPE® infrared radiant heaters!

As early as the initial planning stage, the most important question always is: how can we achieve the best output with the most attractive style and clean-cut design?

The result of this – after countless meetings, tests and prototypes – is elegant appliances that don't look like radiant heaters at first glance.

The HEATSCOPE® **PURE** is the only radiant heater worldwide fitted with a convex SCHOTT NEXTREMA® glass front, to significantly reduce the visible light of the heating elements. The HEATSCOPE® **NEXT** whereas provides maximum heat through the curved frontgrid.

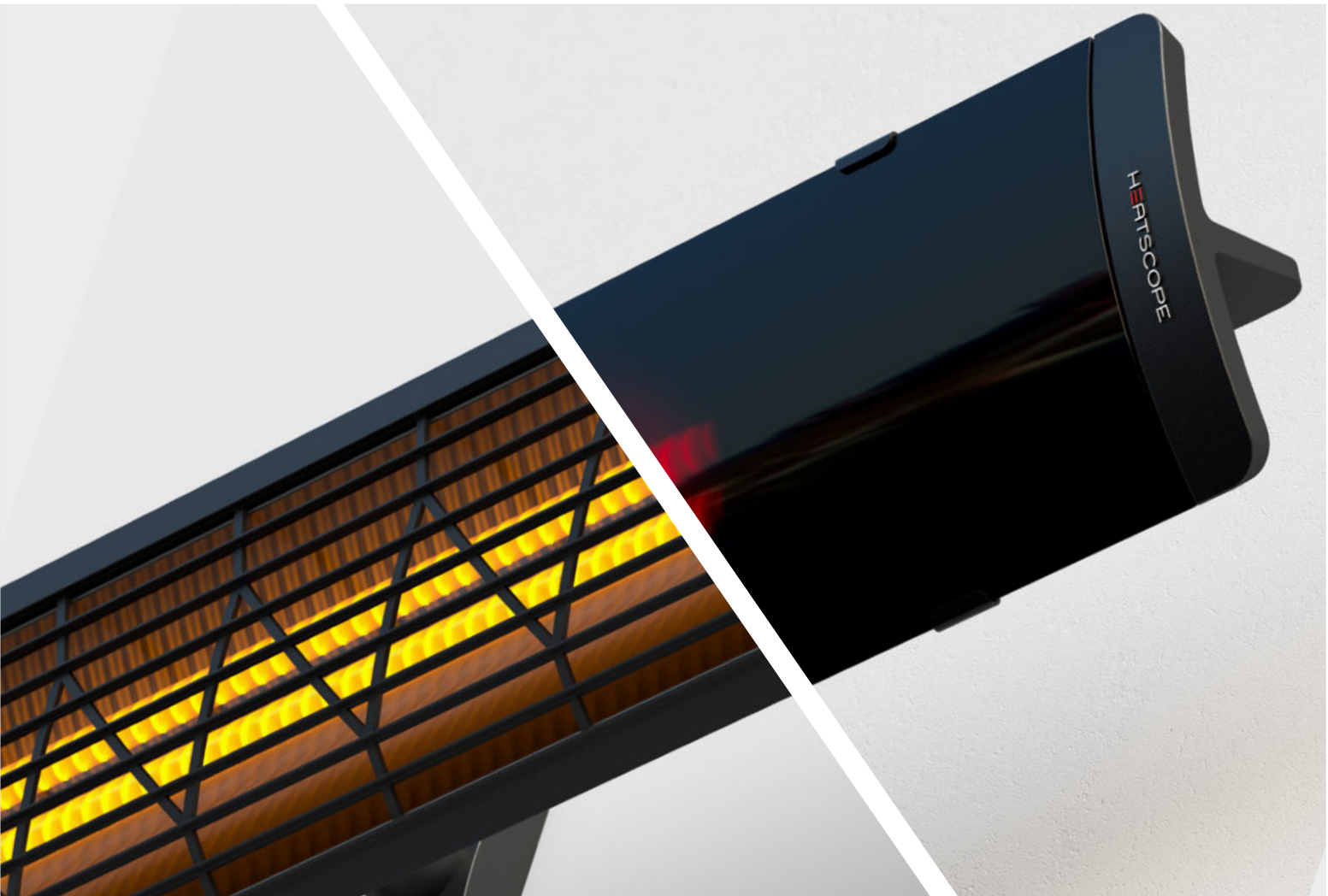
It was no accident that the HEATSCOPE® **PURE** from Design Studio Bjørn Blisse was decorated with the RedDot Design Award in 2018, the HEATSCOPE® **NEXT** with the German Design Award in 2022.



reddot design award
winner 2018



GERMAN
DESIGN
AWARD
SPECIAL
2022



HERTSOPE

PURE⁺. PURE. DESIGN.

Convex glass front screen SCHOTT NEXTREMA®.

Coated aluminium body.

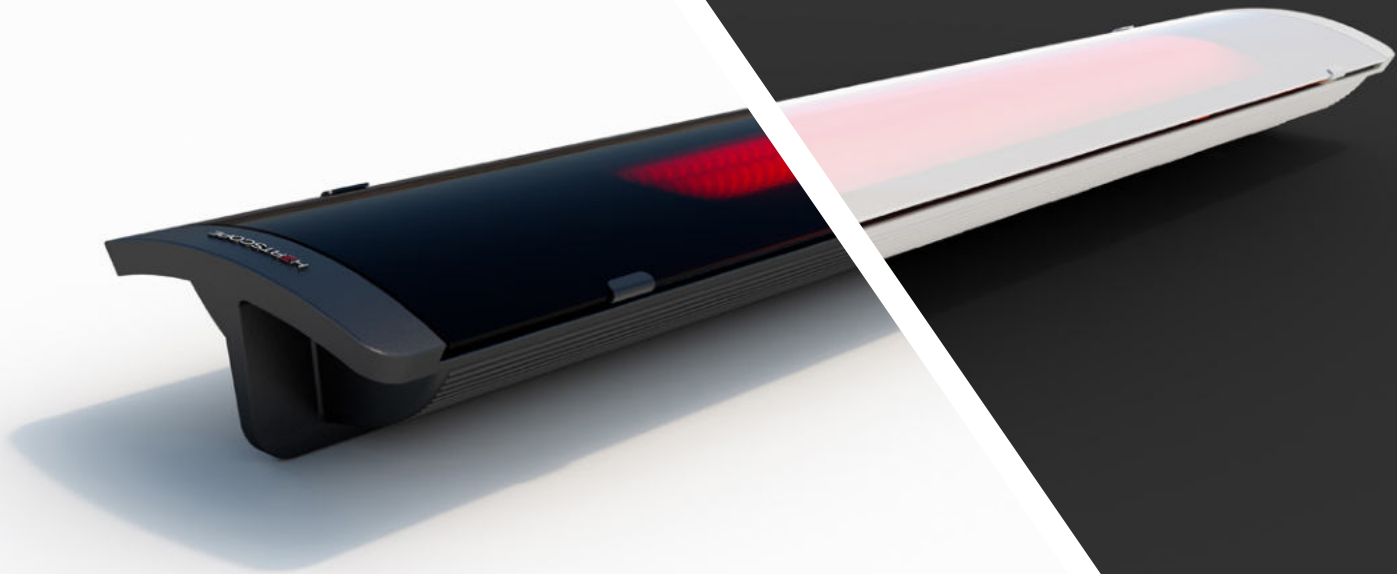
Energy efficient double carbon heating elements.

Patented reflector heating system with ventilated back.

Visible light: <300 Lumen.

Maximum output in 30 seconds.

Item no.:	MHS-PH3000AB.100 / MHS-PH3000WT.100
Colour (front / body):	black / white
Output:	3000 W / 13.04 A
Weight:	7.5 kg
Radiator dimensions:	1044 x 166 x 87 mm
Protection class:	IP65



PURE⁺. NEXT. ENERGY.

Convex shaped heat protection fin front with Y-design.

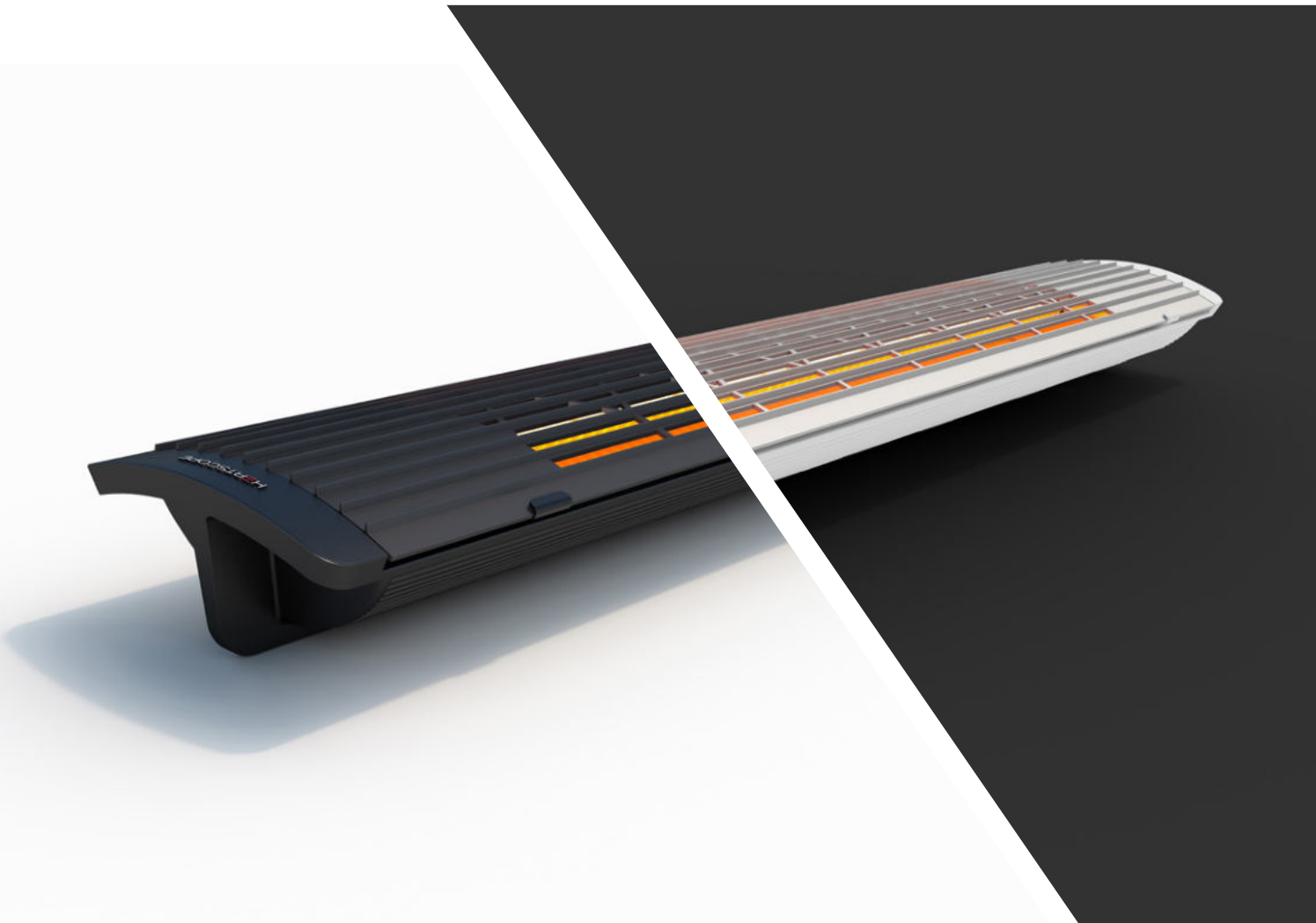
Coated aluminium body.

Energy efficient double carbon heating elements.

Patented reflector heating system with air conditioned back.

Maximum heat output within 15 seconds.

Art.-no.:	MHS-PH3000AB.100 / MHS-PH3000WT.100
Colour (body):	black / white
Colour (front):	black / silver anodized
Power:	3000 W / 13.04 A
Weight:	6.5 kg
Measurements heater:	1044 x 166 x 87 mm
IP protection class (grid):	IP25



SO. EASILY. MOUNTED.



The HEATSCOPE® PURE⁺ comes with a new, colourful fitted bracket for ceiling or wall mounting. The included wall or ceiling bracket only requires two screws to be attached securely.

The radiator is then held only by a clamping rail. On the back of the casing there is a nut which is used to fix it. Finally, the heating corridor can be oriented to the desired angle using the swivel joint.

This saves time, increases flexibility and is elegant.

OPTIONAL. CEILING INSTALLATION. FLUSH.

For flush ceiling installation, HEATSCOPE® developed a new, unique solution. The HEATSCOPE® built-in box enables flush ceiling installation for the PURE⁺ model. The built-in box has two integrated silent fans for cooling.



ON. OFF. AND ON AGAIN.

SMARTBOX is THE control unit for HEATSCOPE® PURE⁺ design heaters!

Just mount it between power supply and heater – and it is possible to control the HEATSCOPE® heater with the included IR remote control, to switch the PURE⁺ ON and OFF, to regulate it down on 50% power or to regulate it back again on full 100% output.

Black or white housing (corresponding with PURE⁺ heater).

With shutdown feature (not somfy® I/O):
automatic shutdown after 4, 6 or 8 hours (deactivation possible).

somfy.

And if you have a somfy® I/O control unit already in action, you will love the SMARTBOX somfy® version for the integration in your existing I/O system. No need to hide big actuators anymore – it's all inside the small box.

Idea + design: Studio Bjørn Blisse



FREE. AND. INDEPENDENT.

STAND is the independantly placeable stand solution for all HEATSCOPE® **PURE+** heaters!

The heater is mounted easily to the **STAND** with the mounting bracket of the **PURE+** (included in the delivery of every heater). The connection to the power source is done with a power connector on the heater side and a Schuko plug on the other.

PURE+ heaters can be stationed individually with the **STAND** system in almost every surrounding (power supply provided).

The **STAND** is available in black and white (corresponding with **PURE+** heater).

Idea + design: Studio Bjørn Blisse



ECO. DESIGN. DIRECTIVE.

At the beginning of 2018 EU the regulation 2015/1188 Ecodesign Directive 2009/125/EG became obligingly effective.

This directive lays down, that electrical room heaters have to be equipped with a thermostat combined with a weekday control whenever installed indoor.

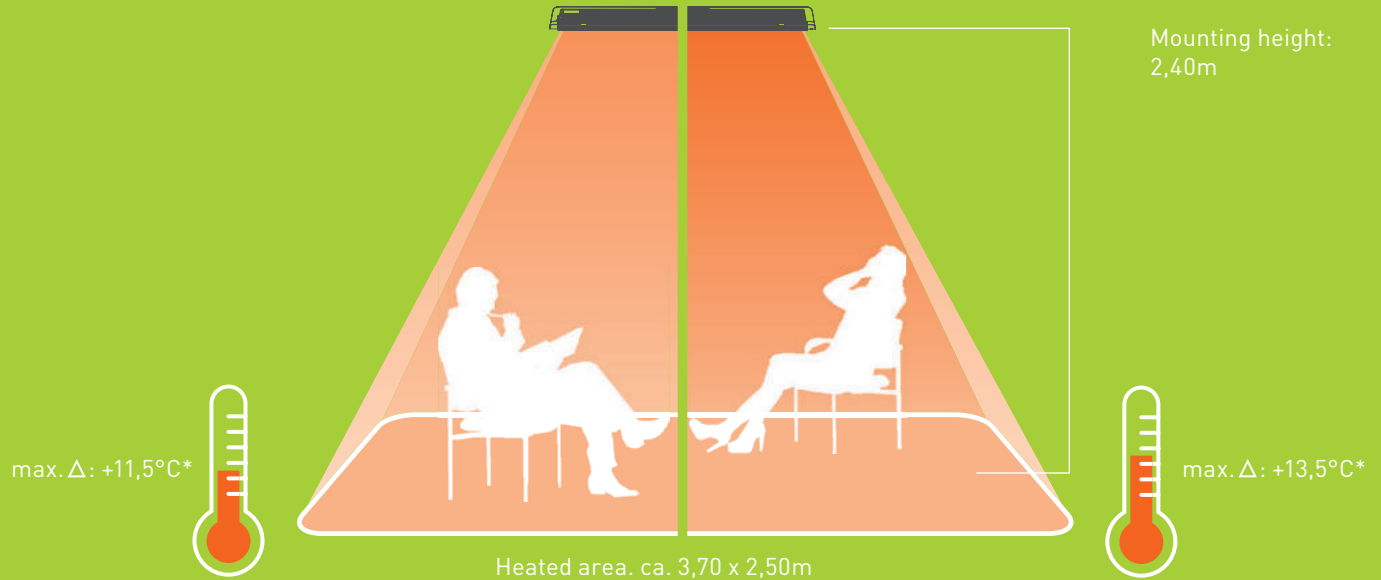
HEATSCOPE® ambient heaters are factory-set delivered without any thermostat control system, what is consequent and reasonable to unnecessarily economize valuable resources.

All heater types can be optionally combined with a special thermostat according to the ecodesign directive.

We recommend DEVIreg™ smart thermostats:

- certified in accordance with the EU Ecodesign Directive.
- weekday control included (several heating times per day).
- max./min. temperature settings, actual/target measures.
- room sensor, floor sensor and window open sensor as well as remote control options/control via app.

PURE⁺ with glass / with grid



*Max. temperature increases achievable in enclosed spaces at 16 °C - depending on the respective installation conditions and mounting height.

HEATSCOPE®

ambient heating

DISTRIBUTION:

MOONICH®
brands for atmosphere

MOONICH GmbH
Kramergasse 32
D-82054 Sauerlach

Tel.: +49 8104 64 70 90
Fax: +49 8104 64 70 99

mail@heatscope.com
www.heatscope.com
www.moonich.de

LICENSER:



MHS Munich Home Systems GmbH
Kramergasse 32
D-82054 Sauerlach
Tel.: +49 8104 64 70 90
mail@munich-home-systems.de

■ developed
■ designed
■ made in
■ Germany

