

## PLANNING GUIDE

# 1 WHERE

### WHERE DO YOU WANT TO USE YOUR HEATSCOPE®?

#### Closed area / indoor

No wind at all

e.g. Conservatory / Summergarden

→ recommended heater types: VISION / PURE / SPOT / NEXT

Need calculation: approx. 200W/m<sup>2</sup>

#### Sheltered outdoor area

No or only moderate wind influence, temperatures > 10-12°C

e.g. covered terrace, 2-3 sides closed

→ recommended heater types: SPOT / NEXT / PURE (VISION)

Need calculation: approx. 300W/m<sup>2</sup>

#### Open/exposed outdoor area

Susceptible to wind

e.g. covered terrace, sides open

→ recommended heater type: SPOT / NEXT

Need calculation: approx. 400W/m<sup>2</sup>

# 2 WHAT

### KIND OF INSTALLATION (WALL OR CEILING)? MOUNTING HEIGHT?

#### Wall installation:

Optimum height: 2.10–2.30m

#### Ceiling installation:

Optimum height: up to 2.50m  
(outdoor) or 3.00m (indoor)

**SPOT:** min.: 1.80m, max.: 3.00m

**VISION:** min.: 1.80m, max.: 2.50m

**NEXT:** min.: 1.80m, max.: 2.70m

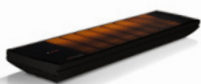
**PURE:** min.: 1.80m, max.: 2.50m

### HOW DO YOU WANT TO OPERATE YOUR HEATSCOPE®?

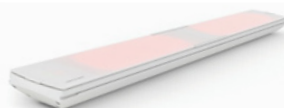
- with the Heatscope IR-remote control or
- with any external remote system (e.g. home automation, somfy, etc.)?

The VISION and SPOT can be used in combination with any external system (Basis-Version) or alternatively provide and integrated remote control (Plus-Version).

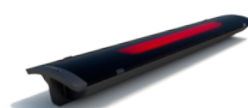
PURE and NEXT can also be operated through any external system. Furthermore it can be operated with the IR-remote control in combination with the optional HEATSCOPE® SmartBox.



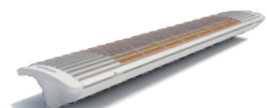
HEATSCOPE SPOT



HEATSCOPE VISION



HEATSCOPE PURE



HEATSCOPE NEXT

**ANY QUESTIONS?**

MHS Munich Home Systems GmbH · Kramergasse 32 · 82054 Sauerlach  
Tel.: +49 8104 64709-0 · mail@heatscope.com · www.heatscope.com

## PLANNING GUIDE

# 3 HOW

### Miscellaneous

**Area:** define the size of the area, probably you don't need to cover the whole area but only the space where a table/ lounge furniture is positioned.

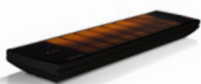
**Minimum distances:** with the delivery of your HEATSCOPE® you receive the manual with all technical information incl. the required minimum distances (to the mounting surface/ ceiling as well as distance between the brackets). You can find all data on the [www.heatscope.com/en/technical-data-of-the-heatscope-radiant-heaters/](http://www.heatscope.com/en/technical-data-of-the-heatscope-radiant-heaters/)

**Fusing:** We recommend a separately fused power supply of 16A for every device. In case of any question or doubt, please provide the technical data to your electrician.

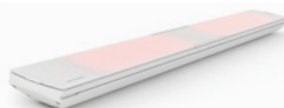
**Weather shield:** in case your HEATSCOPE® VISION/SPOT is installed in a non-covered space and frequent rain/snow from above can be an issue, the VISION/SPOT has to be covered with the weather shield from our portfolio. PURE/NEXT heaters won't need a weather shield due to protection class IP65.

### Extensions

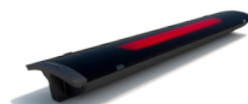
In case you plan to install your HEATSCOPE® on a high ceiling (> 2.50m), we provide within our portfolio extensions to bring down the device to a suitable height



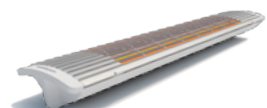
HEATSCOPE SPOT



HEATSCOPE VISION



HEATSCOPE PURE



HEATSCOPE NEXT

**ANY QUESTIONS?**

MHS Munich Home Systems GmbH · Kramergasse 32 · 82054 Sauerlach  
Tel.: +49 8104 64709-0 · [mail@heatscope.com](mailto:mail@heatscope.com) · [www.heatscope.com](http://www.heatscope.com)